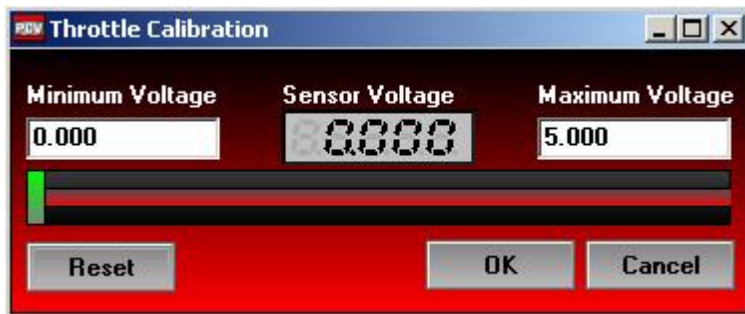


## To Calibrate the Throttle Position

For fly-by-wire motorcycles, do not calibrate the full throttle position unless you are on a dynamometer.

- 1 Select **Power Commander Tools > Calibrate > Throttle Position**.
- 2 Verify the engine is running.
- 3 With the throttle closed, click **Reset**.
- 4 Fully open the throttle and close it. The open throttle value will be stored. The open and closed number can be changed manually to fine tune.



- 5 Click **OK**.